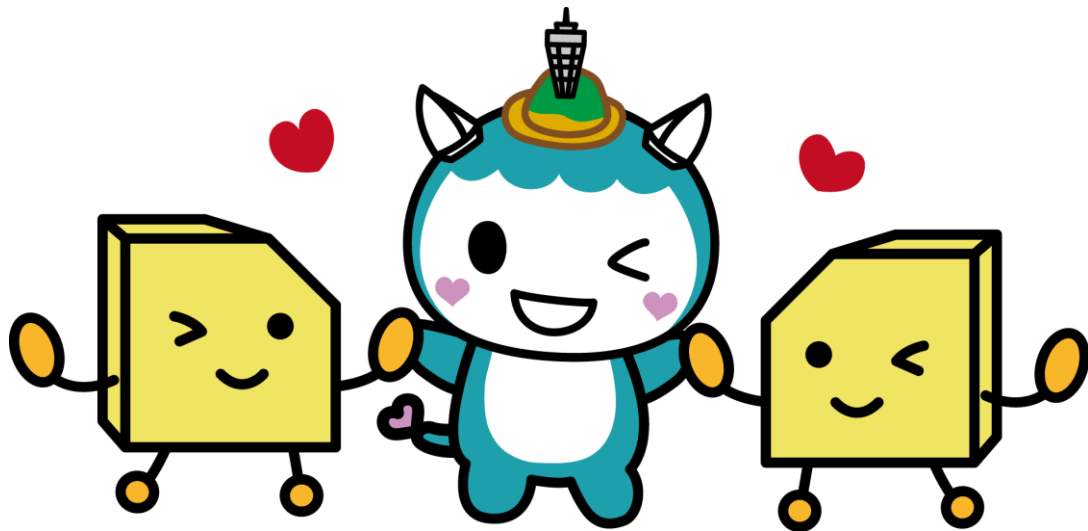


Welcome to Elementary School

~All You Need to Know~



This handbook was created based on the contents of "Ten Points for Enjoyable and Safe Learning at Elementary School for Foreign Parents and Children" published by Kanagawa International Foundation. It is a simplified version to help foreign parents and children learn about elementary school.

Fujisawa Board of Education
Educational Guidance Division

School in Japan

Compulsory education in Japan is 9 years, consisting of 6 years of elementary school and 3 years of junior high school. The grade level is determined by the age of the child.

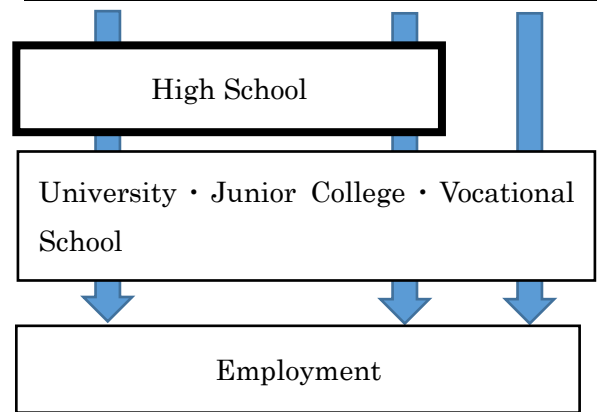
For compulsory education (elementary/junior high) the school you attend is determined by where you live.

Before Starting School

- You will receive a letter from City Hall.
- There will be an information session and a medical examination at the school your child will be attending.

Translation services are available. Please consult City Hall if you require a translator.

| | | |
|----------------------|-------------|-----------------------------------|
| Compulsory Education | Elementary | Grade 1 (Age 6 – 7) |
| | | Grade 2 (Age 7 -8) |
| | | Grade 3 (Age 8 -9) |
| | | Grade 4 (Age 9 – 10) |
| | | Grade 5 (Age 10 – 11) |
| | | Grade 6 (Age 11 – 12) |
| | Junior High | 1 st Year (Age 12 -13) |
| | | 2 nd Year (Age 13 -14) |
| | | 3 rd Year (Age 14 -15) |



Things to get ready for school:

- School Backpack • Stationery (pencil, eraser, pencil case) • P.E. uniform
- Indoor shoes (shoes to wear inside the school)
- Indoor shoes for P.E. (shoes to wear inside the gym)

There are other items to get ready which we will show you at the information session. Label all items with your child's name.



- Does your child have a healthy life rhythm?

It is good for children to learn to wake up by themselves and to look after their own belongings.

They should also know how to go home from school on their own. +

After Starting School

- Besides lessons, there are other activities at school like cleaning the classroom and school lunch.
- Parents need to consult with the school if their child has food allergies or cannot eat certain foods.
- Children walk to and from school with their classmates.
- Parents pay for some things at school, for example, school lunch, workbooks, and field trips.

*There is a system to help with school expenses. Please ask your school about it.



There are other fees as well and an envelope will be sent home to collect them.
The school lunch fee is withdrawn from your bank account.

There are things that parents need to do:

- There are many letters that are sent home from school and forms that you need to fill out and send back to the teacher.
- You need to register for e-mail notifications from school.
- There are home visits (the teacher visits your home) and parent-teacher conferences.
- There are events like the entrance ceremony, class observation days, and graduation.

A typical day at school:

| 8 : 30 a.m. | 1st Period | 2nd Period | | 3rd Period | 4th Period | | 5th Period | 2 : 30 p.m. | |
|---------------------|------------------------------------------------------------------------------------------------------------------------------------------------------------------------------------------------------------------|------------------------------|---------------|------------------------------------------------------------------------------------------------------------------------------------------------------------------------------------------|------------------------------|--------------------------------------|------------------------------|--------------------|----------------|
| Go to School | Study | | Recess | Study | | Lunch Cleaning Recess | | Study | Go Home |
| | <div style="background-color: #ADD8E6; border-radius: 15px; padding: 10px;"> They study subjects like Japanese, Math, Life-Environment, Music, P.E., Art, and Morals. </div> | | | <div style="background-color: #ADD8E6; border-radius: 15px; padding: 10px;"> Children in the upper grades have six periods and go home later. </div> | | | | | |

For those who need help with Japanese

International Classroom

There are seven schools in Fujisawa with International Classrooms.

Children who attend these schools can take classes here a few times a week.

Japanese Instruction

There are classes held inside Shonandai Elementary School for children attending schools that do not have international classrooms. Parents must accompany their children and they need to register for the classes. Please ask your child's teacher about this.

Japanese instruction with a travelling tutor

Children can study with a tutor 1-3 times a week. Ask your child's teacher if you wish to use this service.

I'm worried because there are so many things I don't know

Please ask for help if you are concerned about anything.

- First, ask the school! You can call the school or go to school and ask the teachers.

There are other places in Fujisawa where you can get help. 【Fujisawa City Hall】

| | | |
|--------------------------------------|----------------------------------------------------------------------------------------|-----------------------------------------------------------------------------------------|
| Matters related to school | Board of Education (Educational Guidance Division) | 50-3559 |
| | Education Counseling Center | 50-3550 Weekdays 9:00 AM – 5:00 PM Saturday 9:00 AM – 12:00 PM |
| Developmental counseling/ Support | Children and Family Division | 50-3596 |
| Administration and Daily Life | Citizen Consultation and Information Division Consultation Office for Foreigners | 25-1111 (内) 2578 |
| | Shonandai Community Center *Telephone consultation unavailable | Consultation Days/Times Tuesday/Friday 8:30 AM - 11:30 AM 1:00 PM – 4:00 PM |

*There are also other places in Kanagawa Prefecture that offer consultation services. Please ask the Board of Education about them.